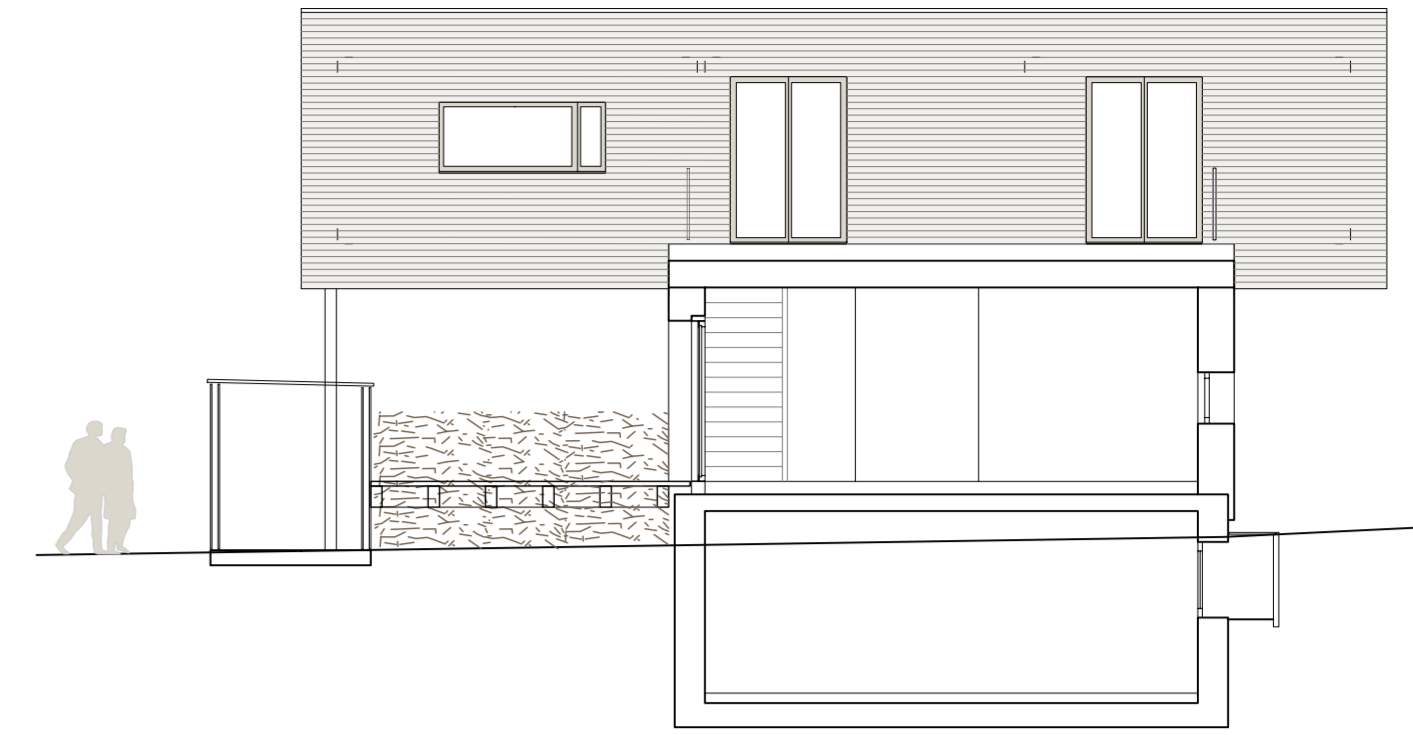
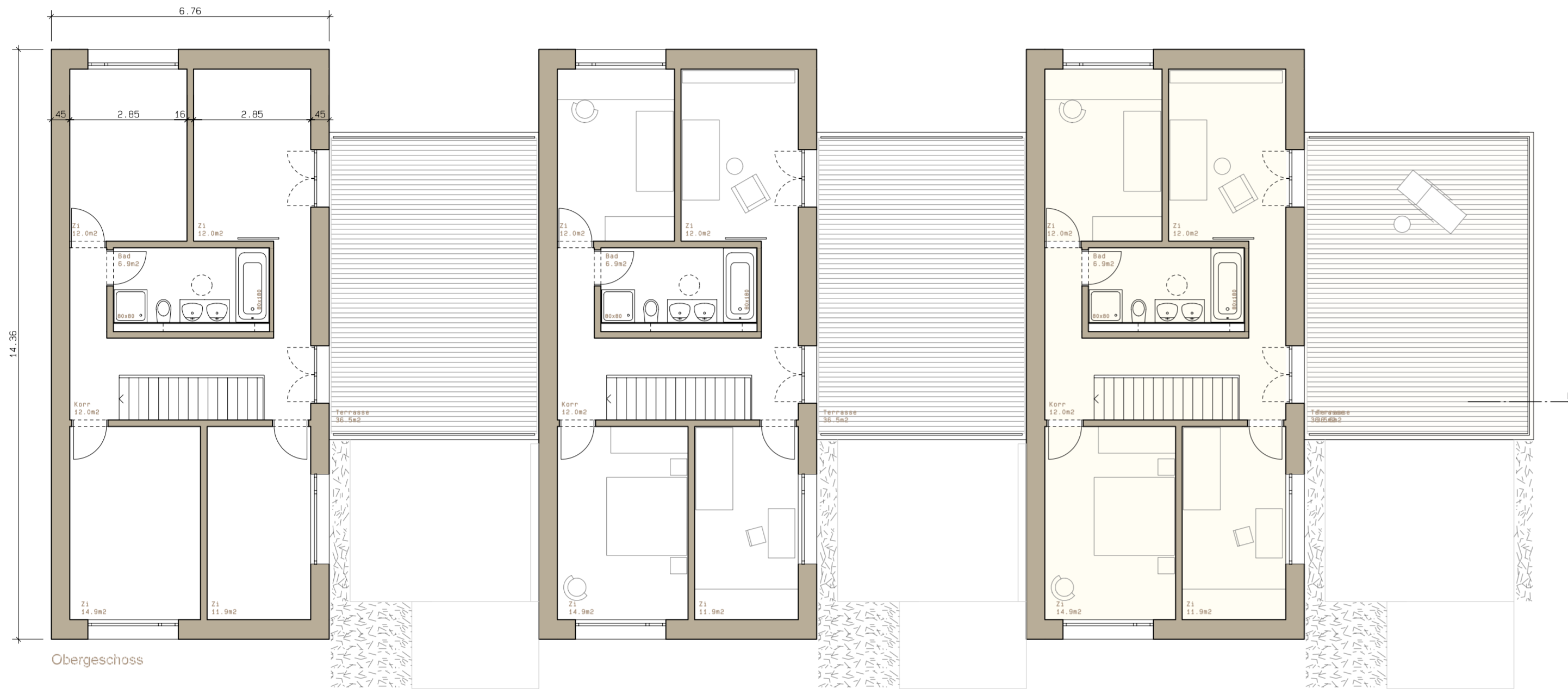


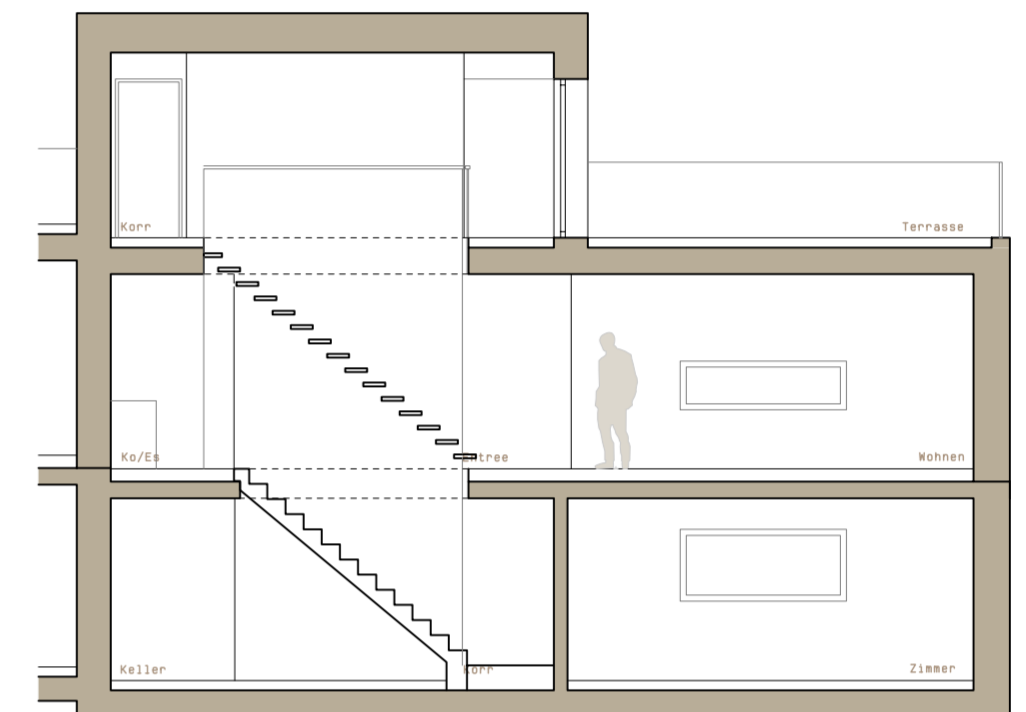
Ansicht West



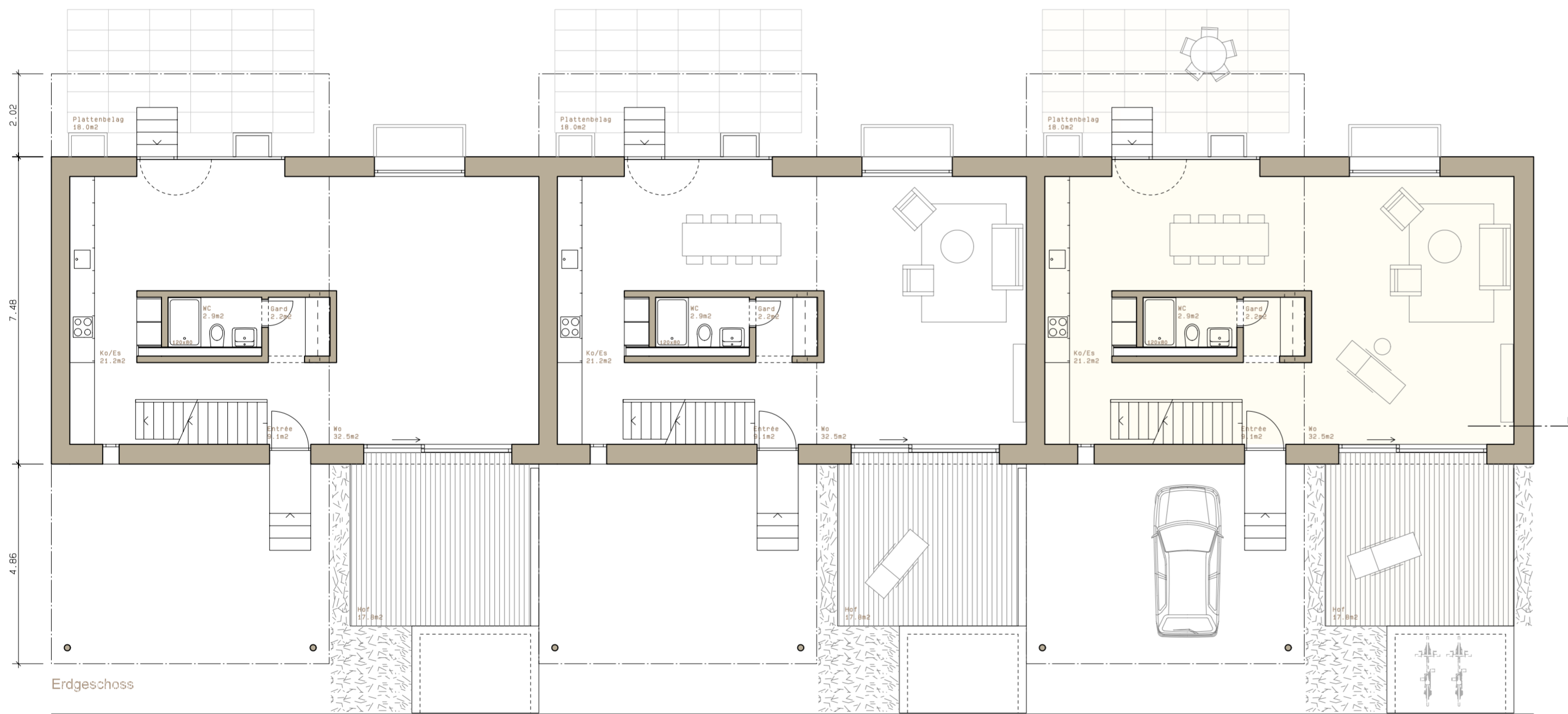
Ansicht Sued



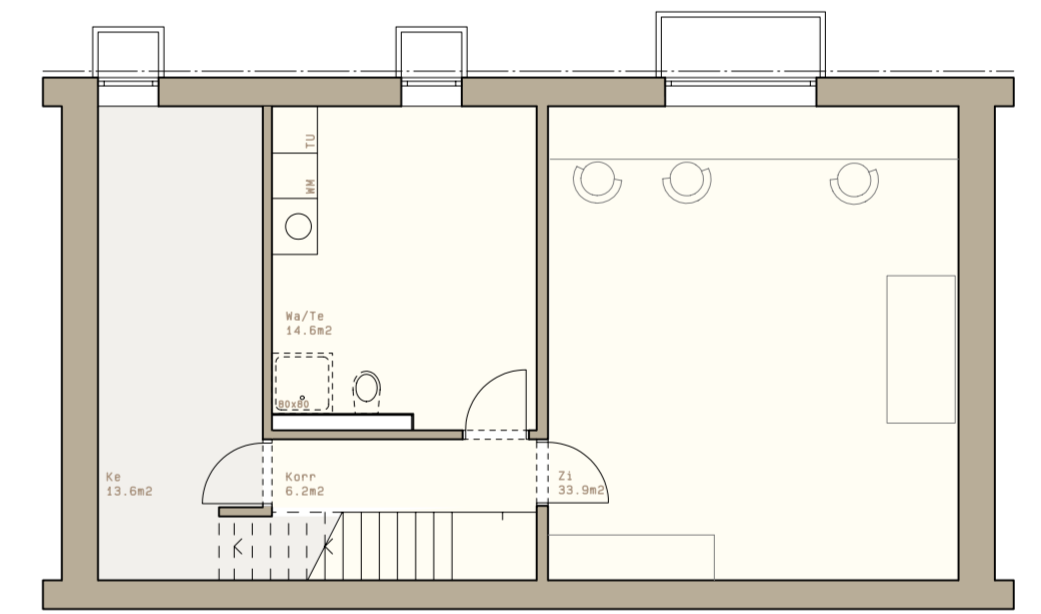
Obergeschoss



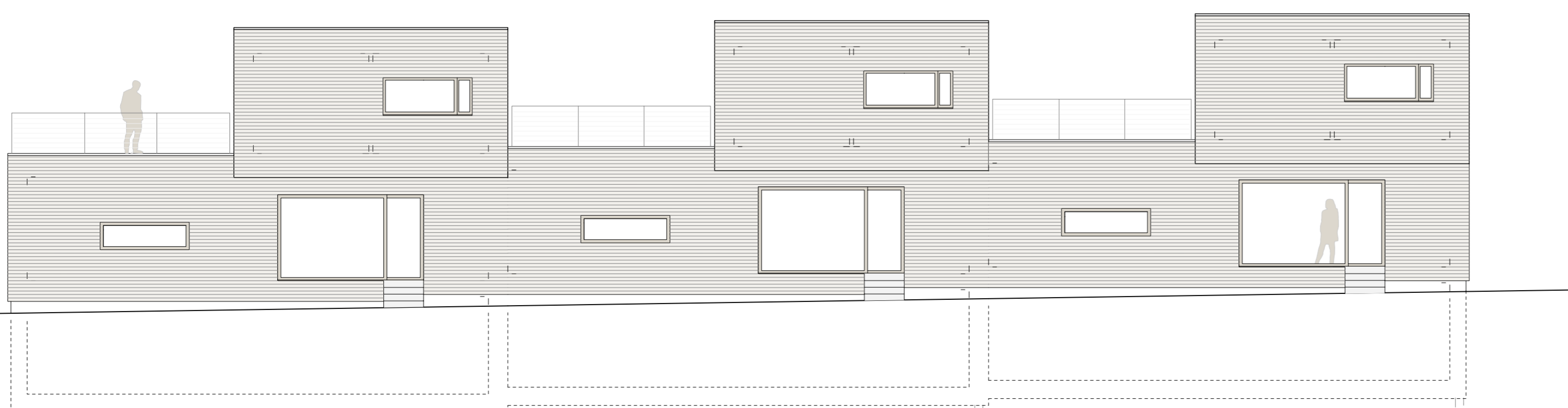
Längsschnitt



Erdgeschoss



Untergeschoss



Ansicht Ost



Architekten  
BSA SA

Husman 9  
CH-5403 Baden 5 Dürholz  
Telefon 054 456 10 80  
Fax 054 454 50 88  
mailto:bsa@bsa-architekten.ch

egli  
rohr  
partner  
ag

WOHNUEBERBAUUNG HAUMENTAL B200 SCHAFFHAUSEN

BAUHERSCHAFT: AXA LEBEN AG, WINTERTHUR, P.A. AXA INVESTMENT MANAGERS SCHWEIZ AG, REAL ESTATE MANAGEMENT,  
AFFOLTERNSTRASSE 42, POSTFACH 6949, 8050 ZUERICH

EFH TYP 2, HOLZBAU UNTERKELLERT

OBJ.NR. 2128 MST. 1:100 FLGR. 60/47 DAT. 11.09.2008 GEZ. HOL/HA  
REV. 12.09.2008 CAD. E11te/D4.r/Baueingabe/efh\_gr\_sn

HAU  
EFH